

## Key Features

- WYSIWYG diagram editor
- Database generation
- Reverse engineering
- Compare and synchronize database and data model
- Configurable report generation (HTML, MS Word and PDF)
- Reusable database objects
- Engineering for 20+ RDBMS
- XML based file format

## DeZign for Databases V6

DeZign for Databases is an easy-to-use data modeling tool that help you design databases for desktop and client/server applications.

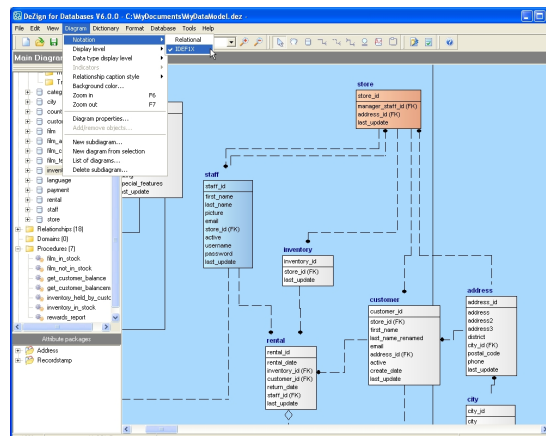
### Visual data modeling

**Entity Relationship Diagramming.** DeZign for Databases uses entity relationship diagrams (ERDs) to graphically design databases. In your diagram you can visually make a design using entities, relationships, subcategories, group boxes and text blocks.

Entity symbols are used to define database table structures, including details about columns (attributes), primary keys, null, unique, foreign keys, domains, check constraints, ....

Relationships are drawn between entities and can include a name, abbreviation, description and the cardinalities (zero, one, many, ...). You can create identifying and non-identifying relationships.

The diagram editor user interface fully supports drag-and-drop of entities, relationships, subcategories, group boxes and text blocks. Moving an entity automatically results in a redrawing of your relationship lines.



**Industry Standard Design Notations.** You can draw your entity relationship diagram (ERD) based on data modeling notations defined by IDEF1X or Crow's Foot (Information Engineering).

**Multiple Display Modes.** DeZign for Databases will display model information at various levels. These display modes can be used at various stages of model development or can be used to convey model information in abstract or in varying depths of detail. You can display an entity with all attributes, keys only or no attributes but only the entity name. You can use indicators for key attributes. Another display option is to show the data types next to the attribute name.

**ER-modeling.** DeZign for Databases supports the ER-modeling techniques. Some advanced features like N:M-relationships (many-to-many relationships) and sub categories (inheritance)

are also supported. "DeZign for Databases" will take care of the translation of the ER-Diagram (your database design) to the physical database (your physical tables or your SQL schema).

### Database Lifecycle Support

**Reverse Engineering.** You can use DeZign for Databases' reverse engineering capabilities to create a data model diagram of your current database system. You can import an existing database by connecting to the database directly or by importing a SQL DDL script. Your complete database will be imported including tables, foreign keys, sequences, triggers, procedures and views. While reverse engineering, the software analyzes the database to find relationships not expressly defined to the database.

**Forward Engineering.** DeZign for Databases can generate databases directly from your data models (ER-diagrams). For SQL databases, the SQL DDL scripts to create your database will be generated. For non SQL databases, the physical database files will be generated directly. You can control what will be generated. Generate individual parts of your model. Generate tables, foreign keys, indexes, domains, sequences, procedures, triggers and views.

**Database/model synchronization.** Our data modeling product offers bi-directional compare and synchronize functionality for all synchronization use cases: model-to-database, model-to-script, database-to-model, script-to-model, model-to-model. When any change is made to either the model or database, DeZign for Databases provides a comprehensive comparison of all differences. Changes can be moved from model-to-database or database-to-model. DeZign for Databases also automatically generates alter scripts to update any database.

### Better Database Designs

**Model Validation.** You can validate a model for errors any time during the design process. During validation, DeZign for Databases checks to make sure the elements in your model are correct and complete.

**Automatic Foreign Key Migration.** DeZign for Databases supports the logical and physical data-level from a single specification achieved by using automatic foreign key migration at design-time. A modification to a property of a relationship or to a primary key will automatically affect foreign keys.

**Reusable Objects.** Domains are reusable user-defined types or "attribute templates" that

## System Requirements

DeZign for Databases is available as a 32-bit application. The product is available for Microsoft Windows NT, 2000, XP, Vista and Windows 7. DeZign for Databases requires a minimum of 16MB RAM. Disk space requirements is 6 MB.

promote consistent domain definitions. You construct domains as you would attributes, specifying a name, datatype properties, default values and validation rules. Afterwards, you can reuse them in your data model by applying them to attributes.

Attribute packages are pre-defined, reusable sets of attributes that promote consistent attribute definitions. You can reuse these attribute packages in your data model by applying them to entities. You can share attribute packages between data models.

**Name Templates.** The name templates editor lets you create naming rules for entities, relationships and constraints that can be reused across the model.

## Model Maintenance

**Diagram Management.** DeZign for Databases extends your modeling power with subdiagrams. You can break a large or complex model into smaller, easier to maintain subdiagrams.

**Object Browser.** The Object Browser provides an additional method for creating and modifying model objects. Rather than presenting a picture of the model in the traditional diagram window manner, the Object Browser provides an organized, ordered view of the model and its contents. You can create, navigate and modify a model in the Object Browser.

**To-Do list.** The To-Do list feature allows you to write a note for unfinished actions. You can attach a to-do item to all model objects (entities, relationships, attributes, sequences, triggers, procedures, views). You can print the complete to-do list or export the list to a CSV file.

## Version Control

Using DeZign for Databases, you can save different versions of a model for archiving or comparison purposes. These versions are stored in the project file.

**Manage Versions.** You can archive your current model, delete versions or edit the version label or the version comments. You can always return to an earlier version of your data model.

**Compare Versions.** DeZign for Databases offers advanced, bidirectional comparisons between two versions.

## Reporting

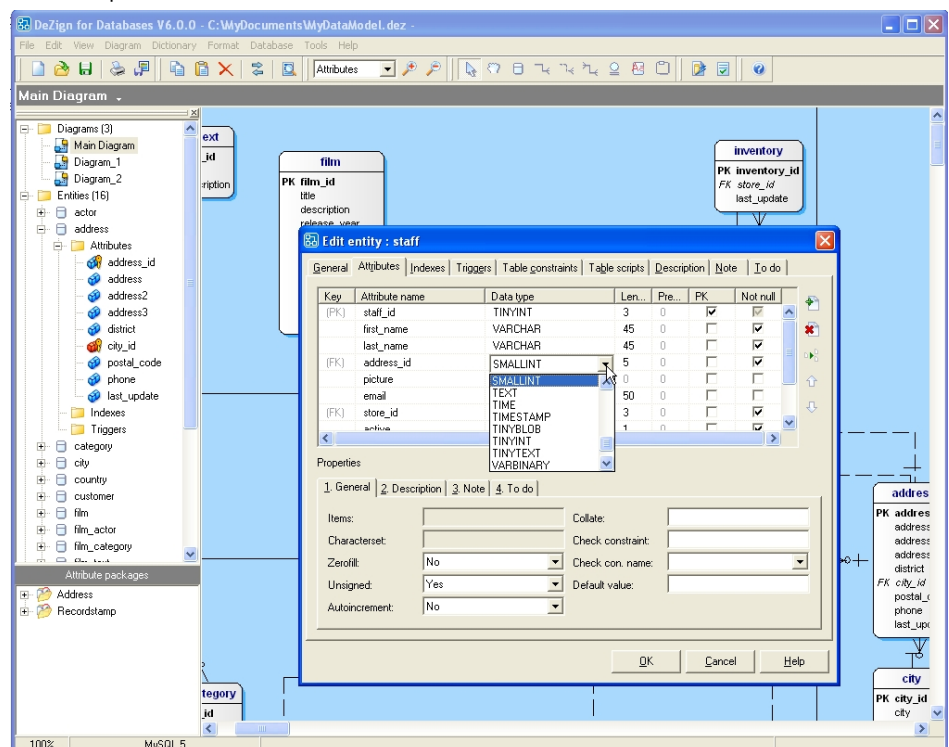
DeZign for Databases provides flexible, customizable reporting and printing capabilities.

**HTML, MS Word and PDF reports.** DeZign for Databases enables reporting and documentation of designs through generation of HTML, MS Word and PDF formatted reports with different levels of details for easy deployment of design information.

**Export Diagram as Image.** The diagram itself can be printed or exported as a bitmap, jpeg-image, gif-image or windows metafile.

## Collaboration

**Compare and Merge Models.** When two or more people work on the same data model, DeZign for Databases has a compare and merge utility for projects. This utility allows developers to compare and merge two versions of the same data model.



Editing entity attributes.

## Supported Databases

Below the list of supported databases. Please note that Import database functionality is only available in the Professional and the Expert edition. Modify database and compare versions functionality is only available in the Expert edition

Database	Dia-gram-ming	Forward Enginee-ring	Reverse Engineering	Compare and update model	Compare and update database
dBase	X	X	Native connection	X	-
DBISAM 4	X	X	Native connection	X	-
Firebird 1.5, 2	X	X	Native connection	X	X
FoxPro	X	X	Native connection	X	-
IBM DB2 Univ. DB 7, 8, 9	X	X	OLEDB connection	X	-
InterBase 6, 7	X	X	Native connection and SQL file import	X	X
Informix 9	X	X	SQL file import	X	-
MS Access 97, 2000, 2003, 2007	X	X	ADO/Native connection	X	X
MS SQL Server 2000, 2005, 2008	X	X	ADO/Native connection and SQL file import	X	X
MySQL 3, 4, 5	X	X	Native connection and SQL file import	X	X
Oracle 8, 9, 10, 11	X	X	Native connection and SQL file import	X	X
Paradox	X	X	Native connection	X	-
Pervasive v8, PSQL v9	X	X	SQL file import	X	-
PostgreSQL 7, 8	X	X	Native connection and SQL file import	X	X
SQLite 3	X	X	SQL file import	X	-
Sybase ASE 11, 12	X	X	SQL file import	X	-

## Compare DeZign for Databases V6 Editions

Std = Standard Edition  
 Pro = Professional Edition  
 Exp = Expert Edition

	Std	Pro	Exp
<b>General</b>			
Copy and paste and drag and drop within or between models.	X	X	X
Undo-support.	X	X	X
Find objects by name or other object properties.	X	X	X
Open file format (XML).	X	X	X
Internal editor with syntax highlighting.	X	X	X
Grid based editing in list of attributes, indexes, triggers etc.	X	X	X
Copy diagram objects to clipboard as image.	X	X	X
To-do list.	X	X	X
<b>Visual Data Modeling</b>			
ER diagramming with support for Crow's Feet and IDEF1X notation.	X	X	X
DBMS-specific data models.	X	X	X
Database-independent data models.	-	-	X
Define entities, attributes, domains, views, indexes, procedures, sequences, triggers, relationships.	X	X	X
Identifying and non-identifying relationships.	X	X	X
Auto layout of objects in diagram.	X	X	X
Drag and drop database objects.	X	X	X
Model validation.	X	X	X
Attribute color coding.	X	X	X
Gradiency for diagram objects.	X	X	X
Automatic propagation of foreign keys (optional).	X	X	X
Attribute packages (reusable sets of attributes).	X	X	X
Multiple display modes (entities, all attributes, key attributes etc).	X	X	X
Name templates for database objects.	X	X	X
Naming tool for batch renaming of objects.	X	X	X
Manage indexes on keys.	X	X	X
<b>Subdiagrams Management</b>			
Subdiagrams to represent objects related to given subject area.	X	X	X
Create subdiagrams for selected objects.	X	X	X
Automatically create a subdiagram for each schema/owner.	X	X	X
<b>Version Management</b>			
Automatically archive a version of the model.	X	X	X
Compare model versions.	X	X	X
Manually archive current model.	X	X	X
Switch between archived model versions.	X	X	X
<b>Reporting</b>			
Print diagram (scalable).	X	X	X
Export diagram as image (JPG, GIF, BMP, WMF).	X	X	X
Generate configurable HTML (navigable), PDF, Word documentation.	X	X	X
Load and save report templates.	X	X	X
<b>Database</b>			
Support for more than 15 databases.	X	X	X
Editor for data type conversion rules.	X	X	X
Switch to another target database.	X	X	X
Generate database from data model.	X	X	X
Generate DDL from data model.	X	X	X
Generate drop script.	X	X	X
Import databases through native database connections.	-	X	X
Import SQL scripts (DDL).	-	X	X
Creates a model upon completing reverse engineering database.	-	X	X
Smart Relationship Finder to infer non declared relationships.	-	X	X
Compare model to database and update model.	-	X	X
Compare model to SQL script and update model.	-	X	X
Compare model to database and update database	-	-	X
Compare model to SQL scripts and update database.	-	-	X
Compare model versions and generate intelligent alteration code.	-	-	X
Conditional generation. A conditional generation directive causes the schema generator to conditionally suppress the generation of portions of the model.	-	-	X
<b>Collaboration</b>			
Compare and/or merge projects.	-	-	X